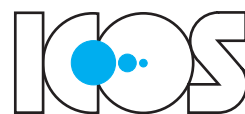


ML



**PARTS AND
GLASSWARE
WASHERS**



ICOS HAS A LONG EXPERIENCE IN THE TREATMENT OF PARTS AND GLASSWARE NORMALLY USED IN THE PHARMACEUTICAL INDUSTRY. THIS NEW RANGE OF ICOS MACHINES FEATURES A SERIES OF INNOVATIVE FEATURES THAT SATISFY THE STRICTLY REQUIREMENTS OF PHARMACEUTICAL INDUSTRY (FDA/GMP).

THESE MACHINE ARE IDENTIFIED BY THE ITEM "ML".

THE "ML" OPERATING PROCESS CONSISTS OF PRE-WASHING, WASHING, RINSING, DRYING AND COOLING PHASES.

FIELD OF APPLICATION

These machines are designed for washing, disinfecting and drying of pharmaceutical products; such as glassware, pipettes, machine parts, tanks, glass bottles, pill stamps, carboys, etc.

MAIN CHARACTERISTICS

- Distribution of load in racks/carts and baskets for a better performance results.
- Washing and rinsing by means of simultaneous combination of water sprayed through nozzles by recycling pump and direct spray of pressurized WFI water; the particles in suspension are skimmed off.
- Disinfecting by means of dosing different type detergents.
- Drying by HEPA filtered hot air at max. 130 °C.
- Chamber and service area can be completely inspected/maintained through loading side (dirty area).
- Automatic opening and closing of chamber doors (vertical or horizontal sliding).
- Chamber doors made in accordance with requirements for clean environments.
- Possibility of interfacing unloading door with isolator.
- Machine equipped with connections for validation tests.
- Various types of racks/carts and baskets for any kind of material.
- Possibility of application of automatic loading & unloading of racks/trolleys.

CONSTRUCTION CHARACTERISTICS

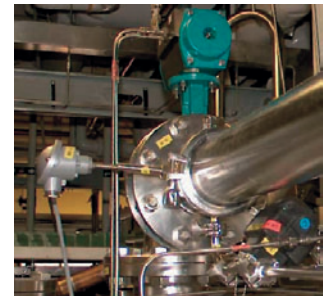
- The machine body and associated safety devices are manufactured and tested in compliance with the standards required in the country of destination. Unless there is a specific request, the machines and systems are manufactured and certified in compliance with the European CE mark.
- Execution of machine in compliance with cGMP.
- Use of sanitary FDA approved and 3A stamped components (valves, filters, piping, tri-clamp ferrules, pumps, etc.).
- Use of 316L stainless steel with roughness less than 0.5 µm (20 micro inches) on all components in contact with the process (machine body, machine doors, spray nozzles bars, process piping, instruments, valves, racks, internal carts, baskets, etc.)
- Respecting of 3-D dead Legs with the application of Zero-Static (0-Dead legs) components
- Respecting of 3 degree slope on process piping
- All internal corners of the chamber are radiused as per cGMP requirement.
- Orbital welding on all piping with tri-clamp ferrules ends
- No. 3 Water supplies of "pharma" type with last rinsing water sprayed directly to the spray nozzles/load.
- Support frames, external fascia panels and any other "not-process" contact part made of AISI 304 stainless steel.
- Machine body insulated with high density ceramic material and with external facing of stainless steel.



LOADING SIDE OF WASHER TYPE ML 100 N-E



WATER RECYCLING LOOP WITH PRESSURE AND CONDUCTIVITY CONTROL



AIR HANDLING GROUP WITH TEMPERATURE CONTROL BY RTD



INTERNAL FINISHING OF WASHING CHAMBERS

CONTROL SYSTEM

The machines of “ML” series are provided with a control system consisting of a controller (PLC), an operating panel (OP) or programmable computer (PC) and printer.

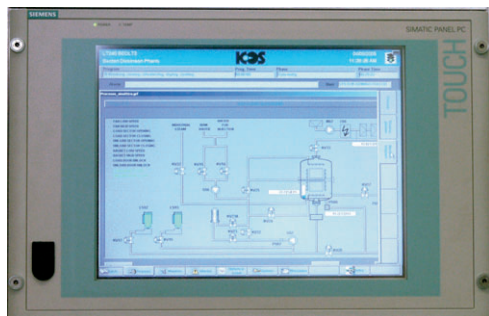
The control system manages the machine and its basic parameters, such as phases time, pump pressure, water pressure, water temperature, air temperature, detergents dosing, water conductivity, water PH, water level control; it allows an easy interfacing with the operator and makes it possible to customize the process cycles and the manual operations.

In addition, the system produces a complete process documentation and assists the users in the operations of machine validation

N.B.: A full description of the control system is contained in the relative booklet.



PLC BRANDS: SIEMENS, ALLEN-BRADLEY, MODICON, MITSUBISHI



OP OR PC BRANDS: SIEMENS, ALLEN-BRADLEY, HAKKO
SCADA SYSTEM DESIGNED FOR FDA 21 CFR PART 11

PROCESS DATA

The process consists of combined phases and actions designed to provide maximum process flexibility. The choice of times and phase succession makes it possible to obtain the most appropriate cycle for the characteristics of the material to be processed.

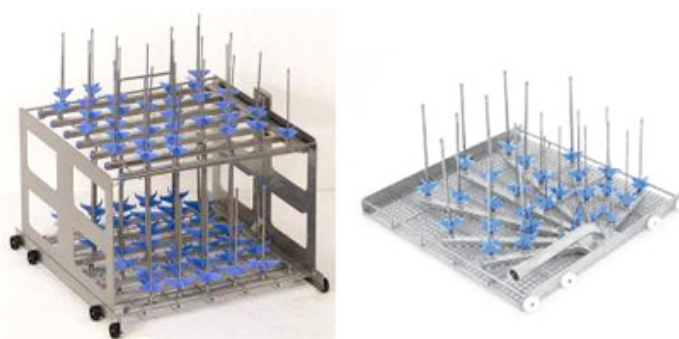
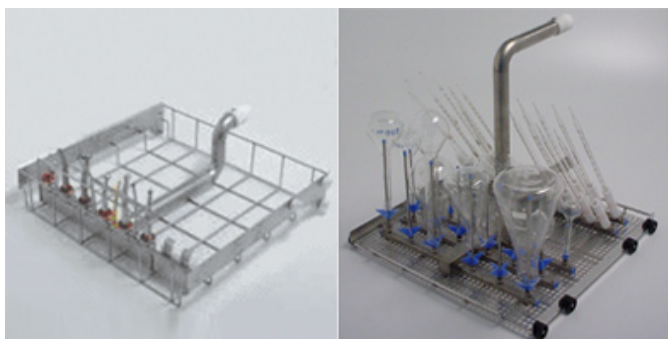
PHASES	ACTIONS
LOADING OF MATERIAL	THROUGH PREARRANGED RACK/CART OR BASKET
PRE-WASHING	WATER LOADING, WATER HEATING, WATER RECYCLING AND WATER SPRAYING THOUGH NOZZLES
CLEANING	THOUGHT DIFFERENT TYPE OF DETERGENTS
DRAIN	WATER DRAIN PLUS CIP ACTION AND PH MEASUREMENT (OPTIONAL)
WASHING	WATER LOADING, WATER HEATING, WATER RECYCLING AND WATER SPRAYING THOUGH NOZZLES
DISINFECTION	THOUGHT DIFFERENT TYPE OF DETERGENTS
DRAIN	WATER DRAIN PLUS CIP ACTION AND PH MEASUREMENT (OPTIONAL)
1ST RINSE	WATER LOADING, WATER HEATING, WATER RECYCLING AND WATER SPRAYING THOUGH NOZZLES
DRAIN	WATER DRAIN PLUS CIP ACTION AND PH MEASUREMENT (OPTIONAL)
2ND RINSE	WATER LOADING, WATER HEATING, WATER RECYCLING AND WATER SPRAYING THOUGH NOZZLES
CONDUCTIVITY CONTROL	ON THE WATER RECYCLING LOOP
DRAIN	WATER DRAIN PLUS CIP ACTION AND PH MEASUREMENT (OPTIONAL)
DRYING	HOT HEPA FILTERED AIR AT MAX. 130°C
COOLING	FRESH HEPA FILTERED AIR AT APPROX. 20°C
UNLOADING OF MATERIAL	IN CLEAN ENVIRONMENT BY MEANS OF PREARRANGED RACK/CART OR BASKET

N.B.: The above phases refer to a standard program.

REFERENCE STANDARDS

In the quality of the materials used, and in their accurate finish, construction and process characteristics, all ICOS machines are in compliance with the most up-to-date standards such as:

- FDA Regulation 21 CFR part 210 and 211
- FDA Regulation 21 CFR part 11
- cGMP
- GAMP 4
- CE
- UL
- NEMA



RACKS/CARTS AND BASKETS OF DIFFERENT TYPES WITH POSSIBILITY OF CUSTOMIZED TYPE

Mod. Serie ML

RANGE OF PARTS AND GLASSWARE WASHERS

	CAPACITY	CHAMBER DIMENSIONS (mm)			OVERALL DIMENSIONS (mm)		
	Lt.	Width	Height	Depth	Width	Height	Depth
ML 100	343	700	700	700	1000 - 1600	2000	1000
ML 200	490	700	1000	700	1000 - 1600	2500	1000
ML 300	857	950	950	950	1300 - 2400	2500	1250
ML 400	3480	1250	1700	1500	1600 - 2800	3000	1750

Note: door of swing out and vertical/horizontal automatic sliding type.



PROGETTO E STAMPA: CENTRO STAMPA - ODERZO (TV)

REV. A



ICOS IMPIANTI GROUP SPA - 33080 CUSANO DI ZOPPOLA (PN) Italy
Via Ellero, 15 z.i. - Tel. +39 0434 979596 - Fax +39 0434 574080

e-mail: sales@icosimpianti.com - web site: <http://www.icosimpianti.com>